

State of Wyoming Corner Record

(In compliance with the *CORNER PERPETUATION AND FILING ACT*, Wyoming Statutes, 1997 Section 33-29-140 et. seq., and the Rules and Regulations of the Board of Professional Engineers and Professional Land Surveyors)

Reverse side of this form may be used if more space is needed.

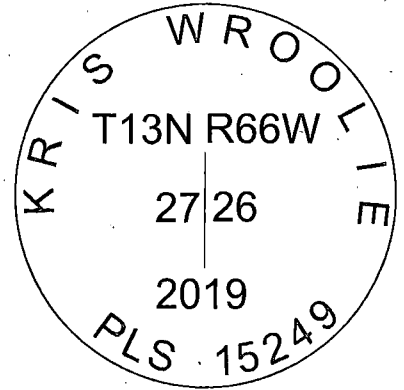
Record of original survey and citation of source of historical information (if corner is lost or obliterated). Description of corner monumentation evidence found and/or monument and accessories established to perpetuate the location of this corner. Sketch of relative location of monument, accessories, and reference points with course and distance to adjacent corner(s) (if determined in this survey). Method and rationale for reestablishment of lost or obliterated corner.

LOCATION: East Quarter Corner of Section 27, T13N, R66W, 6th Principal Meridian, Laramie County.

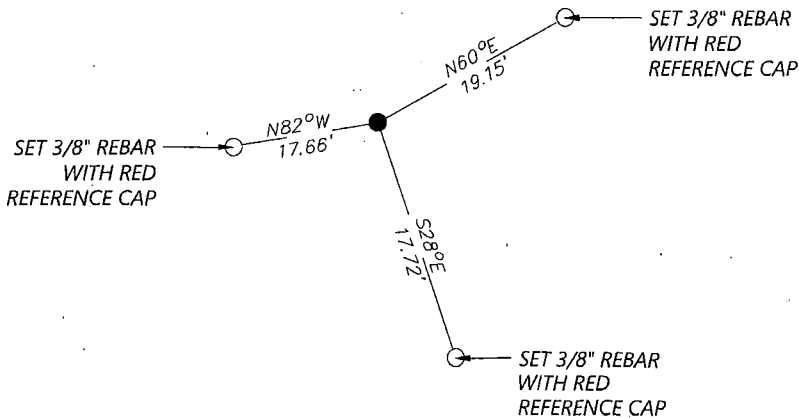
RECORD: GLO - Set a Granite Boulder 14"x7"x6"

RECOVERED: 2019 - Westwood crews searched area and found a 7"x6"x10" granite stone with "1/4" scribed in west face. Also found a T-post 2' to the east.

RESET: Holding stone monument. Set 5/8" rebar with 2.5" aluminum cap LS 15249 north of stone. Set additional ties as shown.



Monument Inscription



Date of Field Work: 9/9/2019

Office Reference: 22237.00

Cross Index Plat

	1	2	3	4	5	6	7	8	9	10	11	12	13	14	15	16	17	18	19	20	21	22	23	24	25
A	+	+	+	+	+	+	+	+	+	+	+	+	+	+	+	+	+	+	+	+	+	+	+	+	+
B	+	+	+	+	+	+	+	+	+	+	+	+	+	+	+	+	+	+	+	+	+	+	+	+	+
C	+	6	+	+	5	+	+	+	4	+	+	+	3	+	+	+	2	+	+	+	1	+	+	+	+
D	+	+	+	+	+	+	+	+	+	+	+	+	+	+	+	+	+	+	+	+	+	+	+	+	+
E	+	+	+	+	+	+	+	+	+	+	+	+	+	+	+	+	+	+	+	+	+	+	+	+	+
F	+	+	+	+	+	+	+	+	+	+	+	+	+	+	+	+	+	+	+	+	+	+	+	+	+
G	+	7	+	+	8	+	+	+	9	+	+	+	10	+	+	+	11	+	+	+	12	+	+	+	+
H	+	+	+	+	+	+	+	+	+	+	+	+	+	+	+	+	+	+	+	+	+	+	+	+	+
J	+	+	+	+	+	+	+	+	+	+	+	+	+	+	+	+	+	+	+	+	+	+	+	+	+
K	+	+	+	+	+	+	+	+	+	+	+	+	+	+	+	+	+	+	+	+	+	+	+	+	+
L	+	+	18	+	+	17	+	+	+	16	+	+	+	15	+	+	+	14	+	+	+	13	+	+	+
M	+	+	+	+	+	+	+	+	+	+	+	+	+	+	+	+	+	+	+	+	+	+	+	+	+
N	+	+	+	+	+	+	+	+	+	+	+	+	+	+	+	+	+	+	+	+	+	+	+	+	+
O	+	+	+	+	+	+	+	+	+	+	+	+	+	+	+	+	+	+	+	+	+	+	+	+	+
P	+	+	19	+	+	20	+	+	+	21	+	+	+	22	+	+	+	23	+	+	+	24	+	+	+
Q	+	+	+	+	+	+	+	+	+	+	+	+	+	+	+	+	+	+	+	+	+	+	+	+	+
R	+	+	+	+	+	+	+	+	+	+	+	+	+	+	+	+	+	+	+	+	+	+	+	+	+
S	+	+	+	+	+	+	+	+	+	+	+	+	+	+	+	+	+	+	+	+	+	+	+	+	+
T	+	+	30	+	+	29	+	+	+	28	+	+	+	27	+	+	+	26	+	+	+	25	+	+	+
U	+	+	+	+	+	+	+	+	+	+	+	+	+	+	+	+	+	+	+	+	+	+	+	+	+
V	+	+	+	+	+	+	+	+	+	+	+	+	+	+	+	+	+	+	+	+	+	+	+	+	+
W	+	+	+	+	+	+	+	+	+	+	+	+	+	+	+	+	+	+	+	+	+	+	+	+	+
X	+	+	31	+	+	32	+	+	+	33	+	+	+	34	+	+	+	35	+	+	+	36	+	+	+
Y	+	+	+	+	+	+	+	+	+	+	+	+	+	+	+	+	+	+	+	+	+	+	+	+	+
Z	+	+	+	+	+	+	+	+	+	+	+	+	+	+	+	+	+	+	+	+	+	+	+	+	+

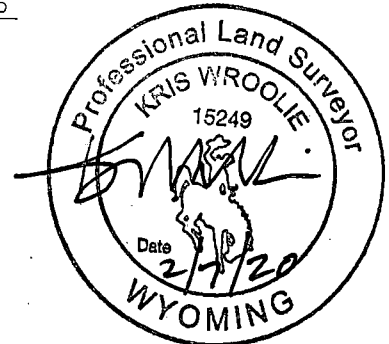
Firm/Agency, Address

Westwood Professional Services
 3701 12th St. N. Ste. 206
 St. Cloud, MN 56303

Telephone Number: (320)-253-9495

This corner record was prepared by me or under my direction and supervision.

SEAL & SIGNATURE



RECP #: 771554
RECORDED 2/13/2020 AT 10:16 AM BK# 2659 PG# 930
 Debra K. Lee, CLERK OF LARAMIE COUNTY, WY PAGE 1 OF 1

Corner Name East Quarter Corner Section 27, T 13 N, R 66 W, 6th P.M.

Cross-Index No.: T-17

County: Laramie Wyoming

SBRPEPLS/PLSW: March 1994; PLSW January 1998